

The logo for onvei, featuring the word "onvei" in a lowercase, sans-serif font. The "o" and "n" are dark teal, while the "v", "e", and "i" are white. The background is a solid teal color with large, white, abstract speech bubble shapes.

# Installation Guide

For Smoke Sensor Zigbee

# Welcome!

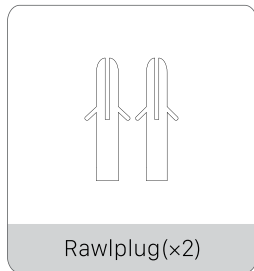
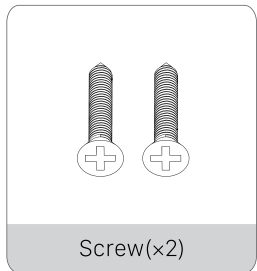
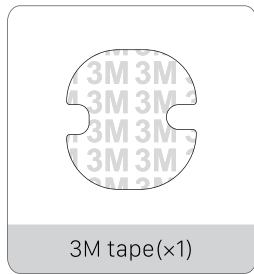
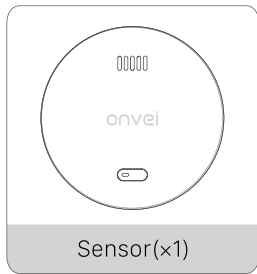
This guide will walk you through the installation of the Smoke Sensor Zigbee.

Start enjoying your smart home experience today!

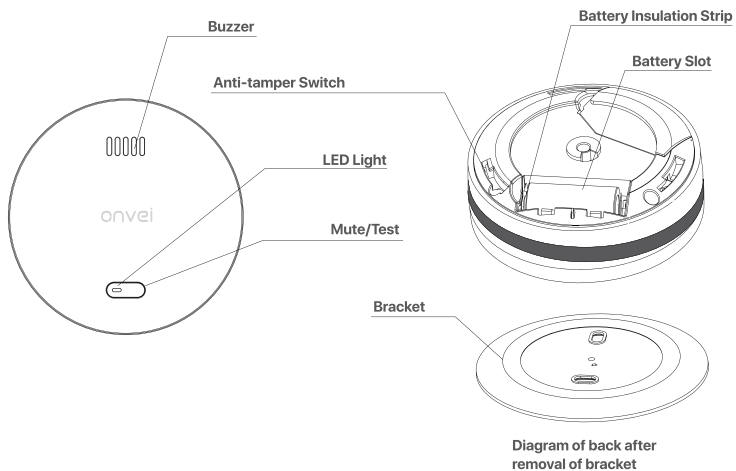
## Content

In The Box .....	2
Appearance .....	3
Install Smoke Sensor Zigbee .....	4
Set up Smoke Sensor Zigbee .....	8
Add Smoke Sensor Zigbee .....	9

## In The Box



# Appearance



## Install Smoke Sensor Zigbee

**Install Indoors Only:** Mount the product on indoor ceilings only.

**Corridor Placement:** Install one unit in each corridor outside bedrooms; add additional units in corridors serving multiple bedrooms.

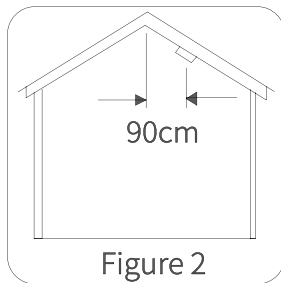
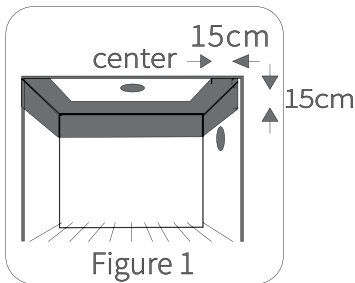
**Coverage for Long Areas:** For corridors or rooms longer than 12 meters, install one unit at each end.

**Multiple Floors:** Install one unit on every floor, including lofts and basements.

**Avoid Obstructions:** Position the unit at least 50 cm away from lamps or decorations and 15-30 cm from corners.

**Slanted Ceilings:** If the ceiling is slanted, install the unit 90 cm below the highest point.

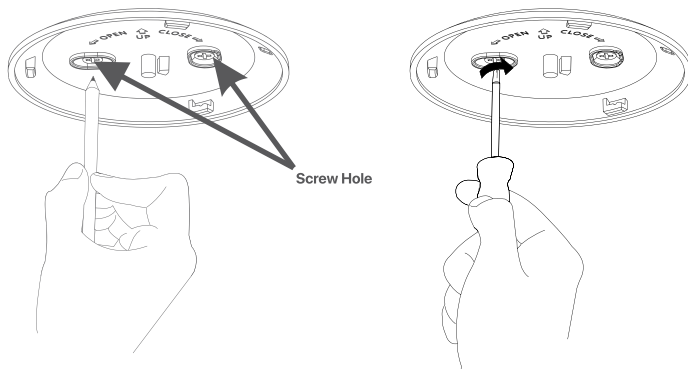
**Note:** The gray area is not recommended to install.



**Note:** Use screws for installation to prevent accidents; adhesive methods are less secure.

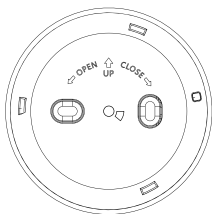
## Installation Instruction I

1. **Marking and Drilling:** At the chosen installation location on the ceiling or wall, mark the center points for the two bracket holes. Drill holes at the marked positions using an appropriate drill bit, then insert the rawlplugs until they are flush with the surface.
2. **Bracket Installation:** Using the two screws provided in the accessories bag, securely fasten the bracket to the ceiling or wall.

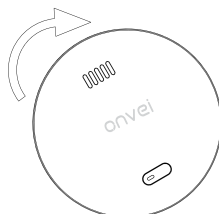


**Note:** Keep the sensor away from dust during drilling.

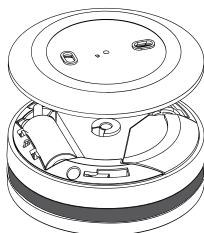
3. Align the body of the product with the Product Installation Icon marked on the bracket.  
Gently rotate the product body clockwise until a distinct “click” is heard, confirming that the product is securely locked into place.



**Product installation  
alignment icon back view**



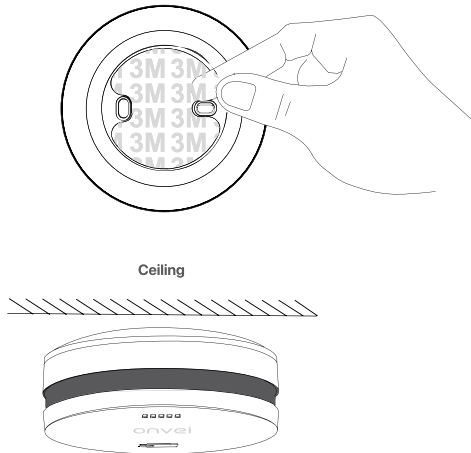
**Product installation  
alignment icon front view**



**Product installation  
alignment icon side view**

## Installation Instruction II

1. Prepare the 3M Tape: Remove the protective film from one side of the 3M tape.
2. Attach the Tape to the Bracket: Securely affix the exposed side of the tape to the back of the bracket, ensuring proper alignment and even coverage.
3. Position on the Ceiling: Remove the protective film from the other side of the tape. Carefully position the bracket against the ceiling at the desired location, then press firmly for at least 30 seconds to ensure strong adhesion.



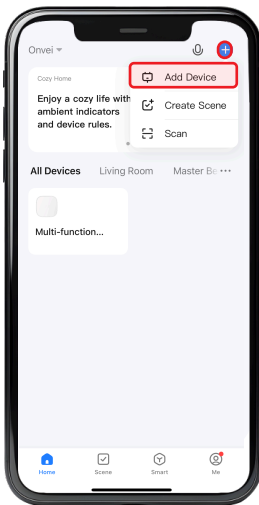
## ① Set up Smoke Sensor Zigbee

To control the Smoke Sensor Zigbee using your mobile device, download and install the Smart Life app. The application is available for download from the QR code provided below:

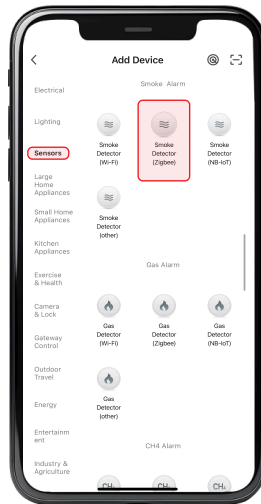


## ② Add Smoke Sensor Zigbee

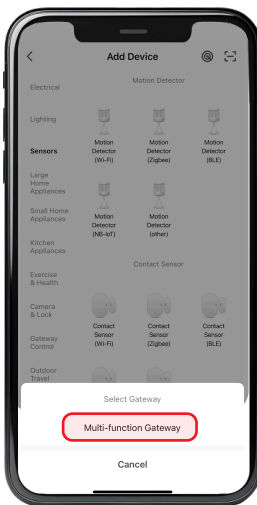
1. Launch the Smart Life app and follow the displayed instructions.
2. Add the gateway to the app according to the Multi-function Gateway Installation Guide.
3. Once the Multi-function Gateway is successfully added, click on "+" and select "Add Device."



4. Navigate to the "Sensors" category and choose "Smoke Detector Zigbee".

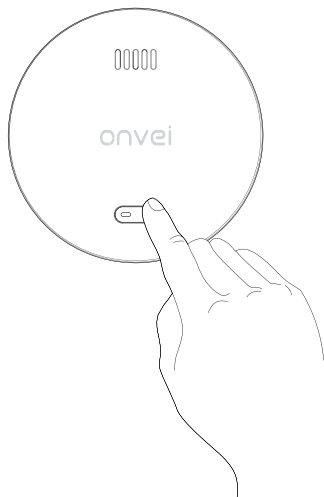


5. Select your gateway.

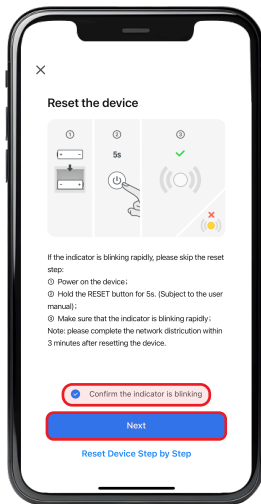


**Note:** The gateway name displayed in this section may differ from the one shown in the example image. It will reflect the custom name you have assigned to your device.

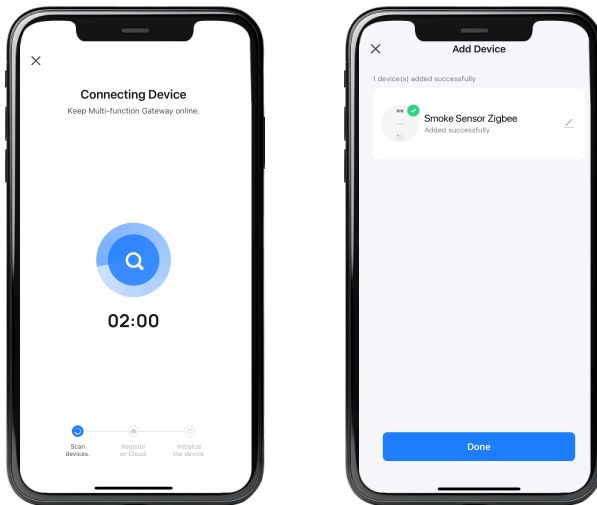
6. Press and hold the "Mute/Test" button for 10 seconds to allow the device to enter pairing mode. The green LED will then flash rapidly.



7. Select "Confirm the indicator is blinking" and click "Next".



8. Wait for the app to detect and initialize the device.
9. After the device is detected and its name appears, click "Done".



**Note:** Ensure you are within a suitable range of the device to establish a stable connection.

# Congratulations!

Your Smoke Sensor Zigbee installation is complete.

Start Enjoying Your Smart Home Experience Today!

[onvei.com](https://onvei.com)